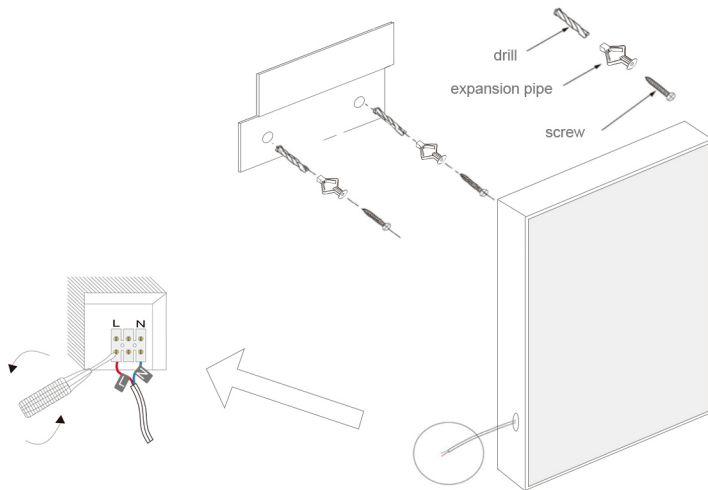


DECORAPORT®

LED MIRROR CABINET INSTRUCTION

1. Installation: Tools Required



TOOLS



ELECTRIC DRILL



HAMMER



+SCREWDRIVER



- SCREWDRIVER

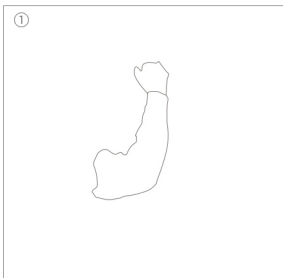


PENCIL



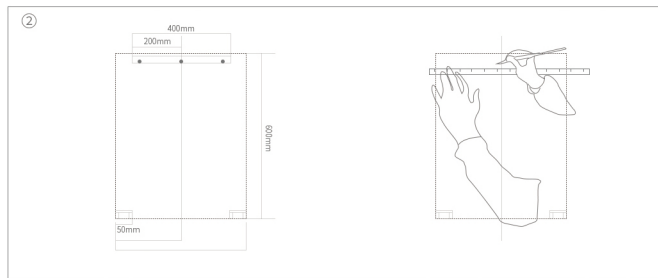
TAPE MEASURE

1. Installation



Wall checking:

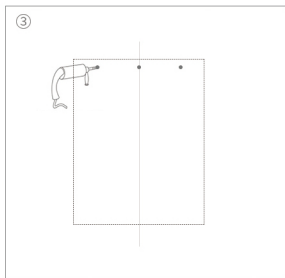
Please make sure the wall is load-bearing walls, can support the weight of the cabinet



Draw installation mark for accessories

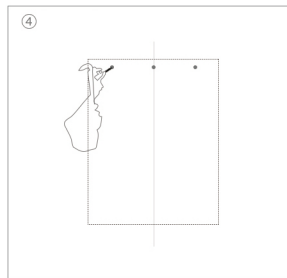
Please follow the size reference for the cabinet installation. Draw the installation point of the accessories on the wall.

Draw the central line first, then draw a rectangular frame, and attach accessories that positioning to the wall of marking the location of hole.



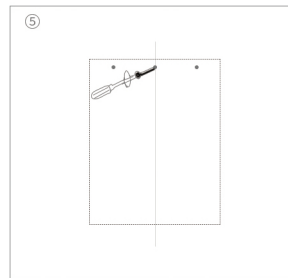
Drill point:

Drill as per the position on the picture



Installation expansion tube:

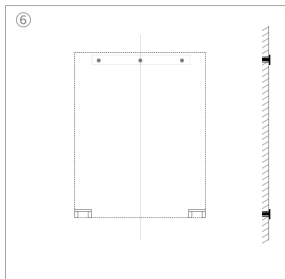
punching the expansion tube into the hole with a hammer



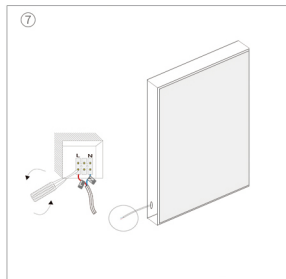
Installation for accessories

Screw the two pendants to the wall

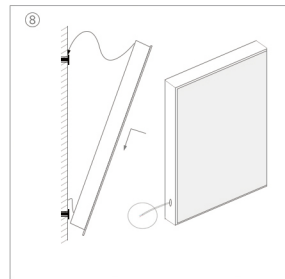
1. Installation



The diagram should be like this picture

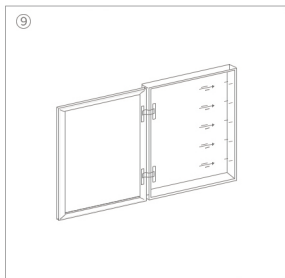


Turn the switch off



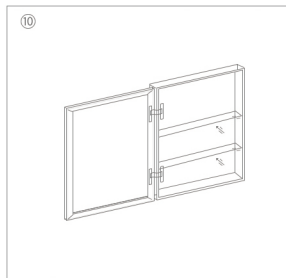
installation cabinet:

The hang hole of back of lens ark aims at the hang piece on the wall, hang into by up and down.



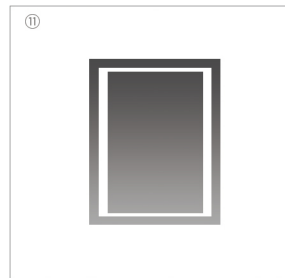
Installation stopple & plate clamp:

Install the plate clamp on the plate hole positioned on user's own, blocked the hole without panel by stopple.



Installation panel:

Put the panel into the cabinet



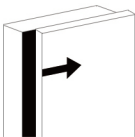
Check 1: refer to mirror door hinge

Check 2: switch, lamp, socket is working normal or not

1. Installation: Hinge Adjustment

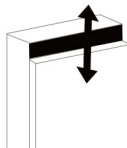


A



Side Adjustment: By adjusting the screw on the hinge so that it can achieve the horizontal adjustment for the door.
Adjustment range: +3mm. :

B



Height Adjustment: By adjusting the screw on the fixed hinge seat so that it can achieve the height direction adjustment for the door.
Adjustment range: +/-2mm. :



Depth Adjustment: By adjusting the hinge cup and hinge seat locking so that it can achieve the depth direction adjustment for the door.
Adjustment range: -1mm~+3mm :

2. Light On/Off & Dimmer



※ **Function 1: Light Switch**

To turn the mirror lights on, one press on the switch, and switch lights turn to white;

To turn the mirror lights off, one press on the switch, and switch lights turn to blue.

※ **Function 2: Brightness Adjustment**

When the light is on, long press to adjust the light brightness, from dark to bright, and long press again to change from dark to bright.

3. Cold & Warm Light



After the light is turned on, press this button to change the light color from cold white, natural white, and warm white.

The mirror will record the light color at the last use, and will be automatic memory of light color for next time use.

4. Anti-fog



Click this button to turn on anti-fog function, and the indicator will turn white when the function is on; press the button again to turn off the anti-fog function and the indicator will turn blue.

Long press, the display goes out and enter the sleep model.

5. Time & Temperature



When the light is off, long press this button until CLO is displayed, then short press this button again, you will see the first digit shows up (hours) on the display screen. Press this button to adjust the number for Hour.

Press this button again to enter the setting for Minute (Ten digit value) and press it again to adjust the number for Minute.

Press this button again to enter the setting for Minute (Single digit) and press it again to adjust the number for Minute.

At last, long press this button to exit the setting, if you do not press the button for 10 seconds, the system will automatically exit the system.